

Meeting: BMS Twirlers/Parents
Thursday, March 24 @6 PM
Room 116 - BHS

Come to the side door at the front of the building - right side

BMS Twirlers

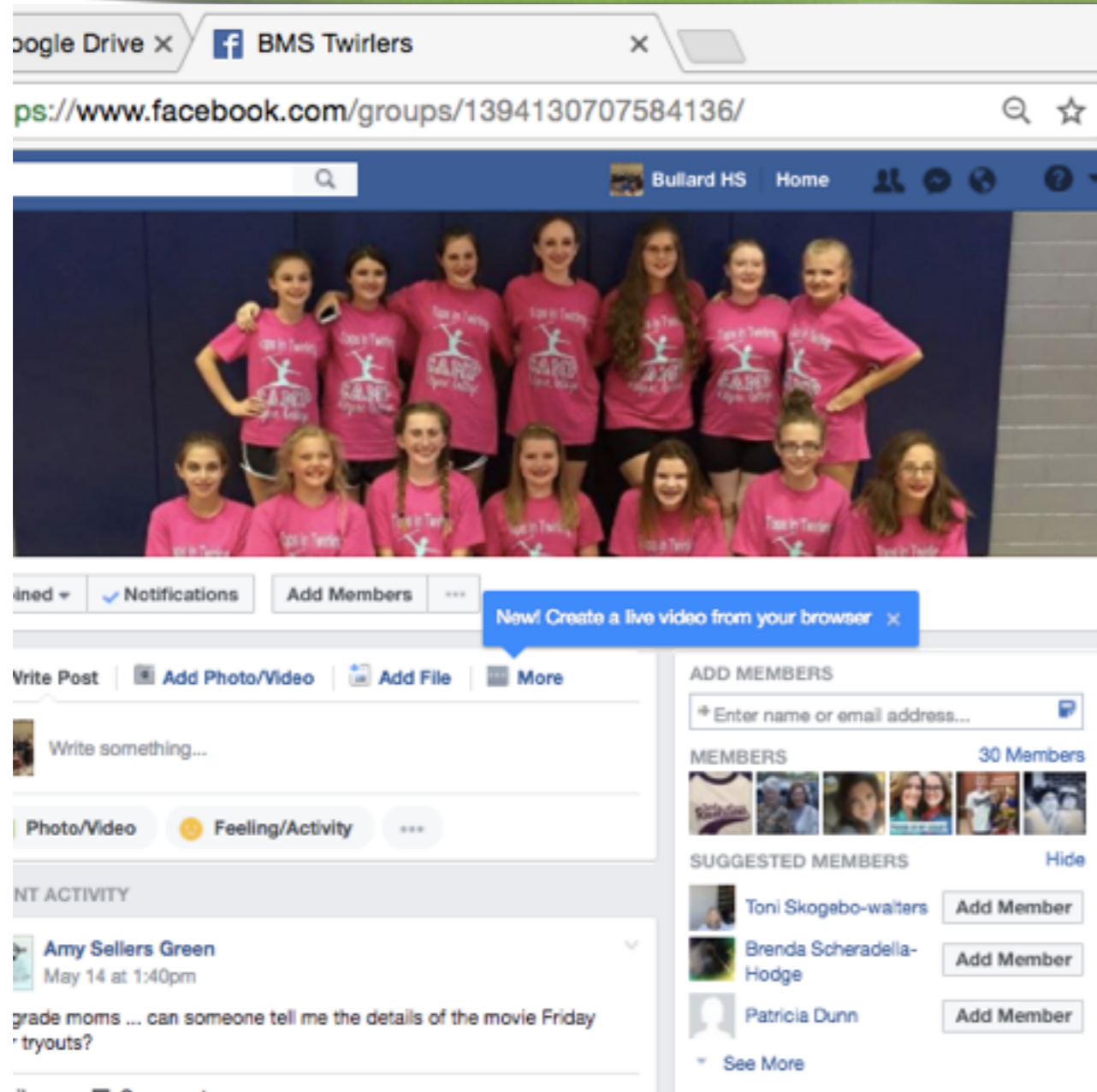
Information & Questions
2018 - 2019

*Congratulations on becoming a
BMS Twirler/Twirler Parent!!!*

Review of Packet

- > Your twirler agreed to (as did you):
- > Fulfill all financial obligations in a timely manner.
- > Be a leader in the band.
- > Be at practice, work very hard, and be very respectful.
- > Be a model student in all areas-including having a positive attitude.
- > Follow instructions set forth for practice attire/performance attire.
- > Understand that if a twirler's performance is not up to par, she will not twirl that week. This includes the school song/fight song.

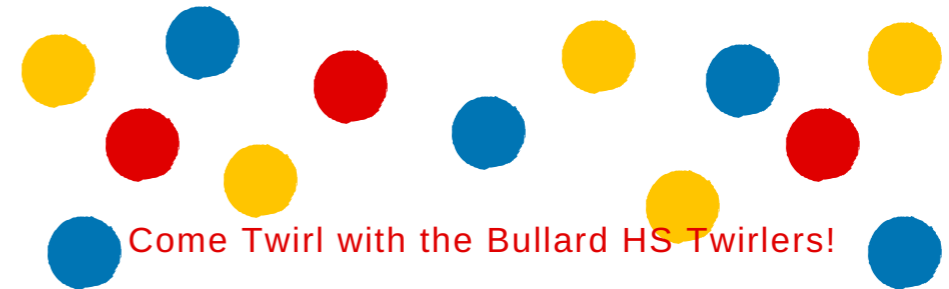
Facebook



- > This is my primary communication tool because it's fast, I can post docs easily, and everyone is able to see responses, etc.
- > Please set your FB so that you receive notifications. Also, check it **FREQUENTLY!**

BHS Twirl Starz

- > Not mandatory, but recommended
 - > fundamentals for beginners
 - > intermediate/advanced skills for experienced
 - > Makeup & performance how-to
 - > fun routine
- > June 20-22
- > Online Registration:
www.bullardtwirlers.weebly.com



Come Twirl with the Bullard HS Twirlers!

BULLARD TWIRL STARZ CAMP

June 20 - 22 from 1 PM - 4 PM



Ages: 1st Grade - 8th Grade
Cost: \$45

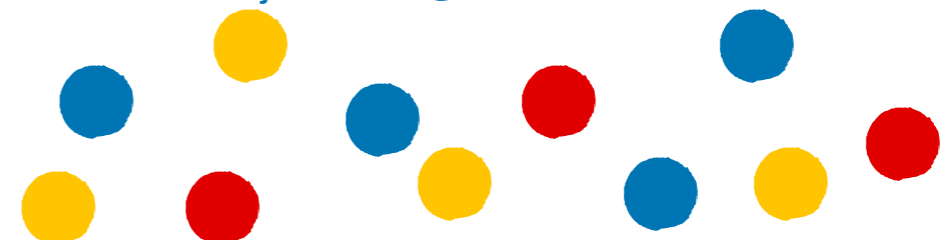
FUNdamentals * Routine *
Craft/Majorette Prep



To Register: www.bullardtwirlers.weebly.com

Questions: Jeri Coke

jeri.coke@bullardisd.net



Tops in Twirling: June 27 - June 30

> Please visit the website and register online. It is posted in our Facebook group and HERE: <https://www.kilgore.edu/campus-life/summer-camps#twirling-camp>

> THIS MUST BE DONE! YOU are responsible for paying online and sending in the waivers, etc. paperwork. (See handout)

Resident Before June 20th - \$225 total

Resident After June 20th - \$275 total

> I will post information regarding packing tips, etc. on Facebook.

> We will work Thursday, June 14 and Monday, June 18 from 10-11:30 AM to prepare for camp and increase our skills. Practice will take place at BHS. You will enter at the back door close to the dance studio.

> We will have matching outfits for each day of camp. TBA

> See Camp Packing List

Choreography Camp

- > This is MANDATORY.
- > When: Tuesday, July 24 - Friday, July 27
- > Time: 9-12
- > Place: Middle School
- > We will learn 2 new routines, polish a routine learned at camp, and work on School Song & Fight Song
- > Cost: \$75 per twirler
- > Checks payable to: Jeri Coke

Practice Schedule Beginning August 8 Through Football Season

- Because we rarely practice more than once a week, we need to prepare prior to school starting.
- Saturdays from 10 AM - 11 AM
- Wednesdays from 4:15-5:45 (could be later if some do not get out of athletics until 4:30)
- We wear our practice outfits. A schedule will be posted in our FB group.

Football Season

- > Thursday games, pep rallies (home only!)
- > Pep rallies: 2:45ish - Check school schedule
- > Themed pep rallies-???
- > Blackout pep rally-We didn't have one last year

Performance Information

- Twirlers must pass off the routine before being able to perform it. This includes the Fight Song and School Song.
- Twirlers must have all parts of uniform, hair styled as instructed, and proper makeup in order to perform.
- School attendance must be regular, no ISS, no 6 week failures in order to perform. (UIL: No Pass - No Play)
- Missed practice=no performance

Projected

Football Schedule (7th/8th)

7th-4:30 pm; 8th-6 pm

All dates/
Times subject
to change.

<u>Date</u>	<u>Opponent</u>	<u>Site</u>	<u>Time</u>
Sept 13	Hallsville	Hallsville	4:00pm
Sept 20	Chapel Hill	Bullard	4:30pm
Sept 27	Athens *	Bullard	4:30pm
Oct 4	Gilmer	Gilmer	4:30pm
Oct 11	Wills Point	Bullard	4:30pm
Oct 18	Rusk	Rusk	4:30pm
Oct 25	BYE		
Nov 1	Brownsboro	Bullard	4:30pm
Nov 8	Canton	Canton	4:30pm

Homecoming
Week:
Homecoming
Parade that
week!

Nov. 2 is Sr.
Night
and probably
MS Band night

Blackout Pep Rally?

Monetary Obligations

Uniform: \$115

Pep Rally: Approx. \$60

Jacket: Approx. \$60 (Will order beginning of August)

Practice/Camp wear: ? will know in the next 2 weeks.

Checks payable to: Bullard Twirlers

Choreography Camp: \$75 - Checks payable to Jeri Coke

Monetary Obligations

- **\$225-Tops in Twirling Camp Fee**
- You must register and pay the balance of \$225 (\$275 if after deadline).
- Registration must be done online.
- <https://www.kilgore.edu/campus-life/summer-camps#twirling-camp>
- Any extra fees for camp outfits must be paid by deadline: TBA

Monetary Obligations

- Remaining Things you must purchase prior to the beginning of school: *Razzmatazz will give a small discount. (*Inside Dance 'n Drill beside Toys 'R Us*)
- Tan Jazz Shoes-no strings (Caramel-not nude)
- Tights-Body Wrappers, jazzy tan, non-shimmery, convertible or full foot
- Twirling Bag - optional-If you earn a spot as a BHS Twirler, you will purchase a new bag at that time.
- Provided that you participate in the Belles Premier, you will purchase a costume for that event.

Fundraisers

- > Fundraiser Ideas: Quick, easy, 1 day
- > Back to School Dance? Pool Party? ??? Ideas?

Competition/Premier

- > Vicki Bowden Mobbs Line Classic - Kilgore College
- > Date: TBA (usually 1st or 2nd weekend in November)
- > You are responsible for transportation
- > Belles Premier

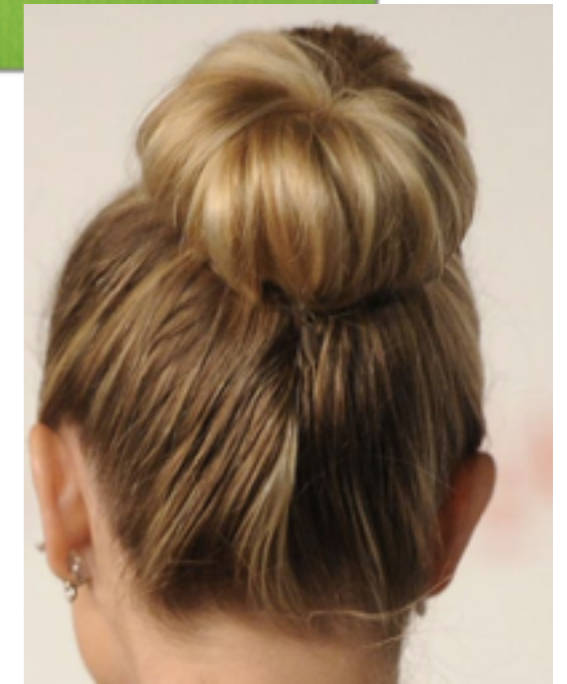
Fun Stuff

- We always get a “Mom/Dad/Grandparent,etc.” shirt to show support at games. (not mandatory, but nice to have :-))
- You may purchase a sticker for your car.
- I don't order/design these things, so I would LOVE it if one of you could head that up.
- Simply Adorable is a good option.

Advice from those who have been there...

- > Don't wash your uniform!
- > Take lots of pics and post in our group for those who aren't able to get pics.
- > Take twirling lessons outside of school twirling
- > Put your daughter's name on EVERYTHING!
- > Buy a roll of electrical tape or tennis tape.
- > You need a steady hand for "smokey eye"...
- > Be flexible - things change and rarely go as planned.

Smokey Eye - Gray/Black



We will wear buns.